

Flat for Sale to Venezia Area: Cannaregio



140 square meters | Bathrooms: 1 | Bedrooms: 3 | Rooms: 7

VENICE CANNAREGIO, a few steps from the F.TE NOVE stop, we offer you a top floor (second) apartment with independent entrance, bright and with an open view that extends over the rooftops, in fair condition, composed and distributed as follows:

A quiet side street leads to the large private entrance, which once housed a well, still present with its curb. An archway leads to a large windowed room currently used as a storage room. Climbing the stairs, we arrive directly to the second floor, which comprises an entrance hall leading to a living room, bathroom, dining room, and eat-in kitchen. In addition to these rooms, there is a storage room/boiler room, two single bedrooms, a double bedroom, a hallway/wardrobe, and finally the attic with beams that spans the entire property, offering a reasonable internal height and a dormer window, which could also be considered for obtaining permits for a roof terrace.

The cadastral surface area is 140 m², and the independent configuration would also allow for the construction of suitable septic tanks for tourist accommodation.

autonomous gas heating

Asking price €465,000

Reference CG342

Property details

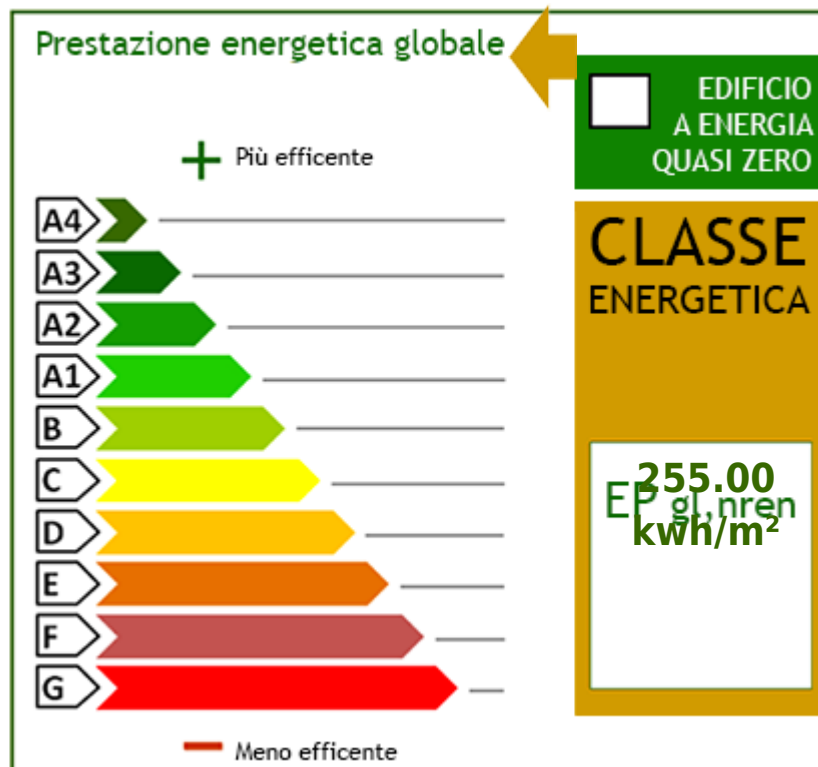
Code: CG342	Reason: Sale
Typology: Flat	Region: Veneto
Province: Venezia	Municipality: Venezia
Area: Cannaregio	Price: € 465.000
Surface: 140 square meters	Bedrooms: 3
Bathrooms: 1	Rooms: 7
Conditions: Not-Bad	Floor: 2
Independent Heating System: Independent	Building Year: 1700
Kitchen: Eat-in-Kitchen	

Features

Tv Antenna: No	ADSL Coverage	Cellar
Keys: Owner	Ceiling Heights	Bathroom: Bath tub

Nearby

Gyms	Spa	Soccer Fields	Fitness Centers
Sports Complex	Bike Lanes	Playgrounds	Railway Station
Public Transport	Kindergarten	Elementary Schools	Schools
High Schools	Cafe	Post Offices	Shopping Centers
Municipal Offices	Vaporetto Proximity	Canal Proximity	



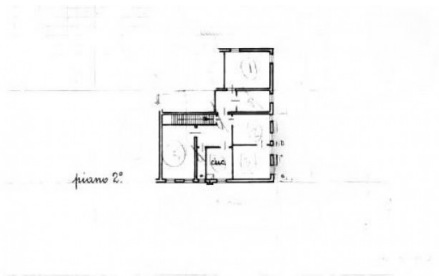




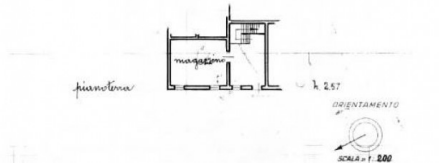








piano 2°



piano terra

h. 2,57

ORIENTAMENTO

SCALA 1:200